

SX1 set

近场探头组 (1GHz-10GHz)



Short description

SX近场探头组包含2个无源近场探头，用于在研发阶段以高时钟频率测量电子模块上的电场和磁场，频率范围为1GHz到10GHz。SX探头组的探头可以紧贴电子模块进行测量，比如贴近单个集成电路引脚、导线、元件及其连接点，从而定位干扰信号源。通过相应地操作近场探头，能够测量出电子模块上电磁场的方向及其分布。这种近场探头小巧轻便，并具备外皮电流衰减和电屏蔽。这种近场探头可以接到频谱分析仪或示波器的50Ω输入端。探头内部有一个终端电阻。

High clock rates, e.g. above 3 GHz approach 10 GHz already at the 3rd harmonic. These harmonics are decoupled from RF sources on the board, e.g. conductor sections, ICs and other components. Other structural parts of the assembly can be excited to oscillate and lead to interference emission. With the high internal base frequency of today's assemblies, the measurement of harmonic frequency multiples is an important step towards an EMC-compliant assembly.

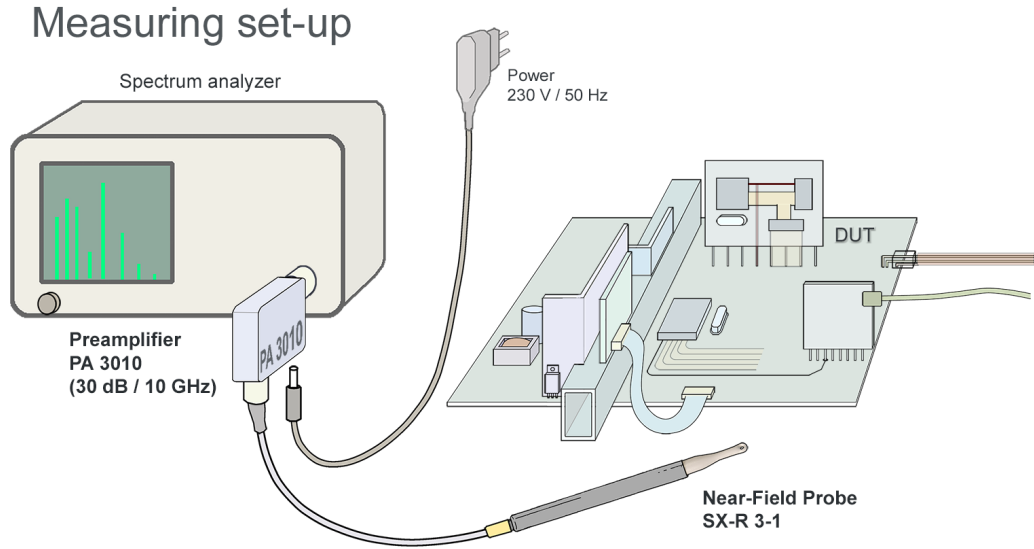
Delivery content

- 1x SX-E 03, 电场探头 (1GHz-10GHz)
- 1x SX-B 3-1
- 1x SX-R 3-1, 磁场探头 (1GHz-10GHz)
- 1x SMA-SMA 1 m es, SMA
- 1x Case 4

Technical parameters

频率范围	1 GHz - 10 GHz
接口	SMA, female, jack
重量	200 g

Measurement set-up near-field probes



Application SX-R 3-1

