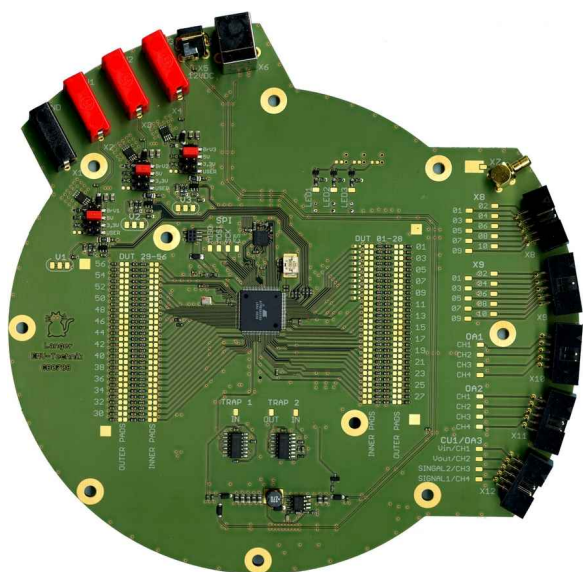


# CB 0708 连接板



## Short description

CB 0708型连接板控制并显示受测集成电路。该连接板嵌入GND 25型接地板，并且通过端口与受测集成电路相接。在连接板的边缘留有外部设备或信号的外接插口。

The micro controller on the back side of CB 0708 monitors the communication with the test IC. It provides an interface to a PC to send and receive commands and signals via USB. The incoming and outgoing signals can be connected with the test IC and the micro controller via wiring fields. Thus, the CB 0708 can be adapted to the respective test IC. The three LEDs allow for the visualization of freely selectable signals.

## Technical parameters

电源电压	12 V DC or USB
接口	USB
重量	200 g
尺寸 (L x W x H)	∅ 215 mm, H = 23 mm

Port designation

